

WHEAD

AVENUE

82.50'
41.25' 41.25'
14' 27.25' 27.25'

STREET

AVENUE

RIALTO

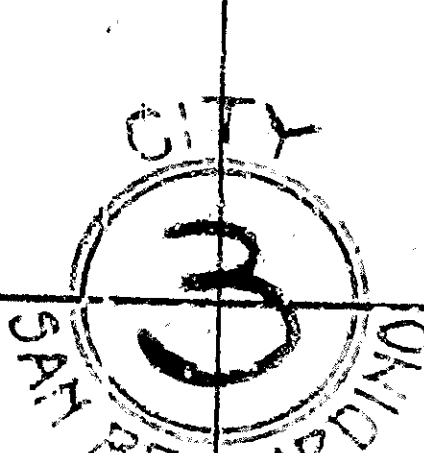
SECOND

STODDARD

AVENUE

STREET

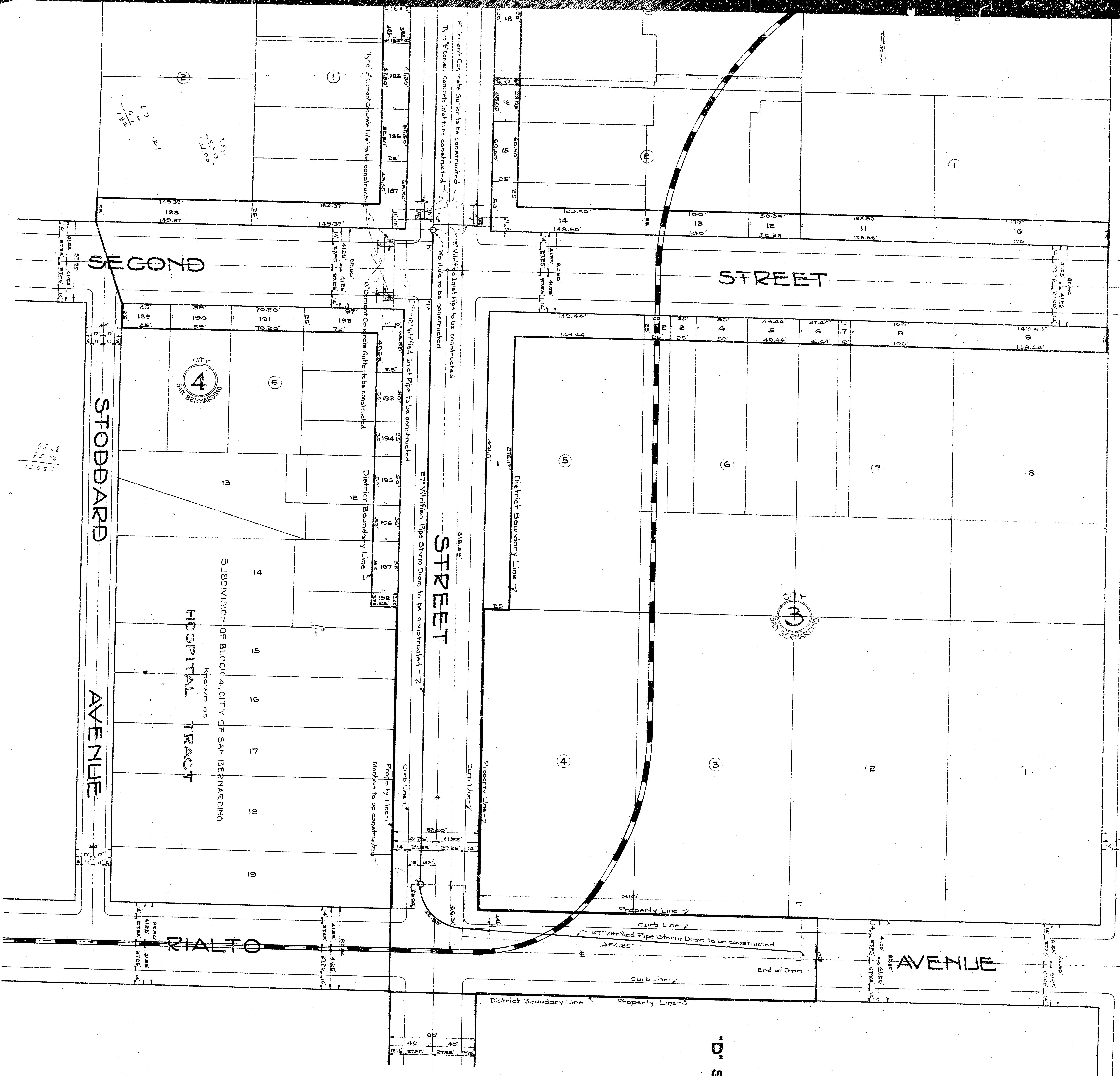
SUBDIVISION OF BLOCK 4, CITY OF SAN BERNARDINO
KNOWN AS
HOSPITAL TRACT



**MAP SHOWING DISTRICT
FOR THE IMPROVEMENT OF
"D" STREET
BETWEEN
RIALTO AVENUE AND FIFTH STREET
RIALTO AVENUE
BETWEEN
"D" STREET AND A POINT 310 FEET EAST THEREOF
CITY OF SAN BERNARDINO, CALIFORNIA.**

APRIL 1932
A. H. LOWE
CITY ENGINEER

- LEGEND**
- X Cement Concrete Gutters to be constructed shown thus
 - X Cement Concrete Inlets to be constructed shown thus
 - X Vitrified Pipe Storm Drain to be constructed shown thus
 - X Vitrified Inlet Pipes to be constructed shown thus
 - X Manholes to be constructed shown thus
 - X Type "A" Cement Concrete Inlets to be constructed shown thus
 - X Type "B" Cement Concrete Inlets to be constructed shown thus
 - X Type "C" Cement Concrete Inlets to be constructed shown thus
 - X Lighting Conduit and Cables to be installed shown thus
 - X Type 1112 "M" Barbed Wire Posts to be erected shown thus
 - X Pacific Electric Railway Cars to be erected shown thus
 - X District Boundary Line shown thus



WHEAD

AVENUE

82.50'
41.25' 41.25'
14' 27.25' 27.25'

STREET

AVENUE

RIALTO

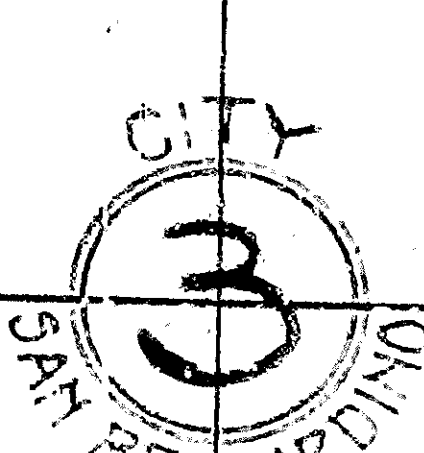
SECOND

STODDARD

AVENUE

STREET

SUBDIVISION OF BLOCK 4, CITY OF SAN BERNARDINO
KNOWN AS
HOSPITAL TRACT



**MAP SHOWING DISTRICT
FOR THE IMPROVEMENT OF
"D" STREET
BETWEEN
RIALTO AVENUE AND FIFTH STREET
RIALTO AVENUE
BETWEEN
"D" STREET AND A POINT 310 FEET EAST THEREOF
CITY OF SAN BERNARDINO, CALIFORNIA.**

APRIL 1932
A. H. LOWE
CITY ENGINEER

- LEGEND**
- X Cement Concrete Gutters to be constructed shown thus
 - X Cement Concrete Inlets to be constructed shown thus
 - X Vitrified Pipe Storm Drain to be constructed shown thus
 - X Vitrified Inlet Pipes to be constructed shown thus
 - X Manholes to be constructed shown thus
 - X Type "A" Cement Concrete Inlets to be constructed shown thus
 - X Type "B" Cement Concrete Inlets to be constructed shown thus
 - X Type "C" Cement Concrete Inlets to be constructed shown thus
 - X Lighting Conduit and Cables to be installed shown thus
 - X Type 1112 "M" Barbed Wire Posts to be erected shown thus
 - X Pacific Electric Railway Cars to be erected shown thus
 - X District Boundary Line shown thus

